



Buy it for looks. Buy it for life.®

*There is more than 1 version of this model.  
Page down to identify the version you have.*

**DESCRIPTION**

- Metal construction with chrome plated finish
- 1/2" connections: IPS - exterior, CC - interior
- Includes showerhead, arm and flange, tub filler spout

**OPERATION**

- Acrylic knob handles with hot and cold color indicators
- Volume and temperature controlled by rotating either handle counterclockwise to open and clockwise to close

**FLOW**

- Showerhead is limited to 2.5 gpm (9.5 L/min) Max.

**CARTRIDGE**

- 1224 cartridge design
- Nonmetallic and stainless steel materials

**STANDARDS**

- Third party certified to meet CSA B-125, ASME A112.18.1M and all applicable requirements referenced therein.

**WARRANTY**

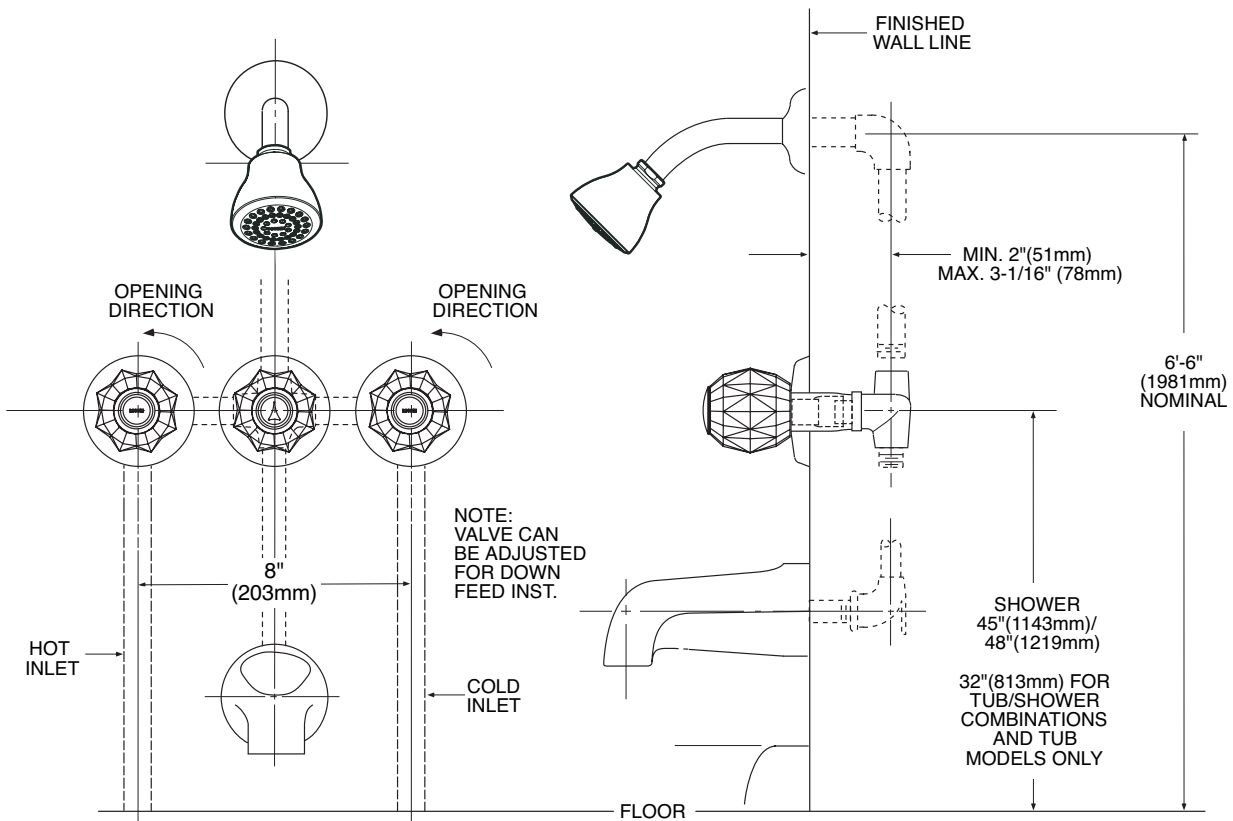
- Lifetime limited warranty against leaks, drips and finish defects to the original consumer purchaser
- 5 year warranty if used in commercial installations

# Specifications



**CHATEAU®  
Three-Handle Tub/Shower Valve**

**Model: 2995**



**CRITICAL DIMENSIONS**

(DO NOT SCALE)



Buy it for looks. Buy it for life.®

# Specifications

## DESCRIPTION

- Chrome plated metal construction
- 1/2" IPS connections
- Includes showerhead, arm and flange

## OPERATION

- Dual control
- Acrylic knob style handles
- Volume and temperature controlled by rotating either handle counterclockwise to open and clockwise to close

## FLOW

- Showerhead is limited to 2.5 gpm (9.5 L/min) max.

## CARTRIDGE

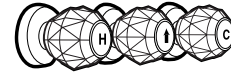
- 1224 cartridge design
- Nonmetallic and stainless steel materials

## STANDARDS

- Designed and manufactured to comply with the requirements of: CSA B-125 and ASME A112.18.1M and all applicable requirements referenced therein

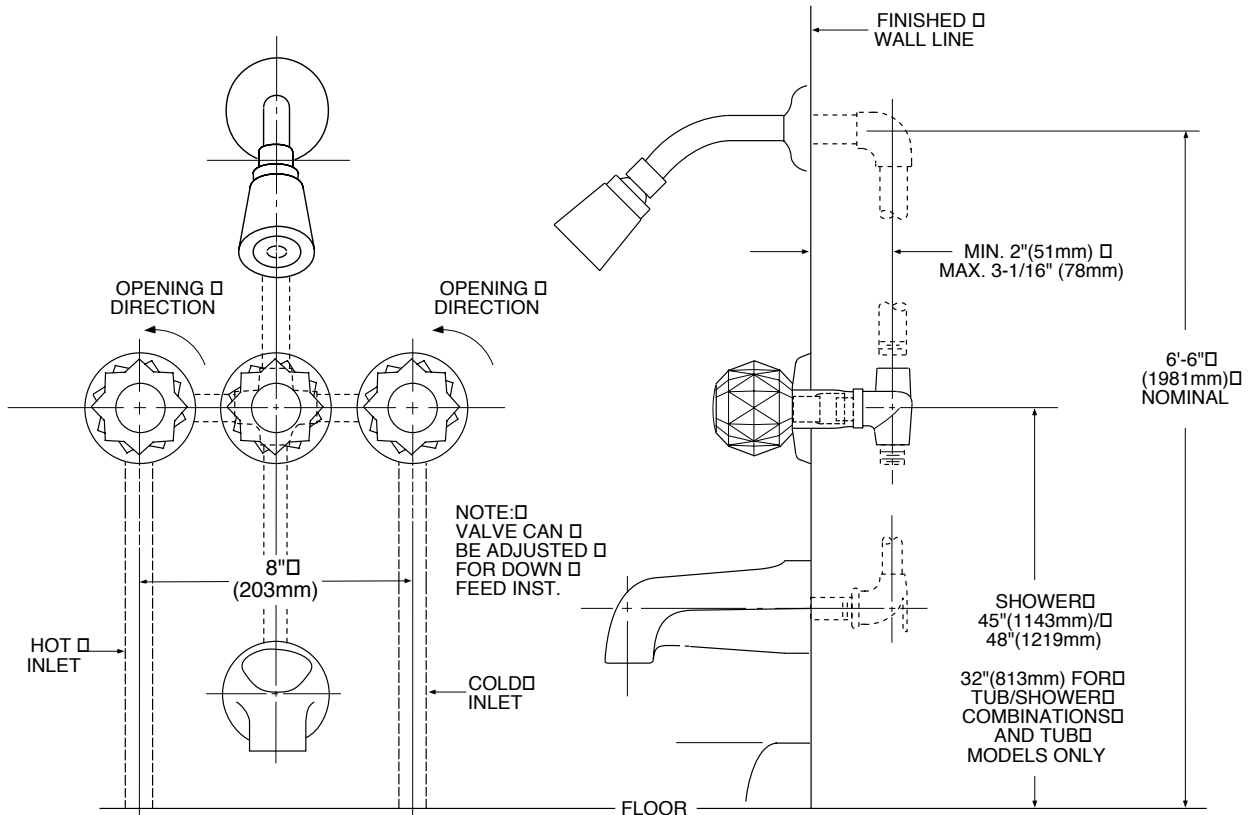
## WARRANTY

- Lifetime limited warranty against leaks, drips and finish defects to the original consumer purchaser
- 5 year warranty if used in commercial installations



## CHATEAU® Three-Handle Tub/Shower Valve

Model: 2995



## CRITICAL DIMENSIONS

(DO NOT SCALE)

FOR MORE INFORMATION: 1-800-BUY-MOEN

[www.moen.com](http://www.moen.com)